



Whimsy Rose PARTY DRESS

By Khristal Jouett

PATTERN ADAPTATIONS
AND CONSTRUCTION
NOTES CONTINUED
FROM ISSUE #139

VIEW THE WHIMSY
FLOWER TUTORIAL IN
“TUTORIALS & VIDEO TIPS”

DESIGN OPTION: Modifying "Natalie"

MATERIALS

All materials are from store.marthapullen.com. For convenient links, go to www.sewbeautifulmag.com and select "Shop"/"Featured Products"/"Issue 139"

Fabric

- ▶ 1/2 yard of wine cotton velveteen
- ▶ 2-1/2 to 3 yards of gold and wine striped silk dupioni (limited quantity available) (amount will vary according to length of skirt). Allow extra for bodice and sleeve lining, or select another fabric for lining.

Trim

- ▶ 4-inch-wide ribbon for belt (enough for waist or longer for sash)
- ▶ 3 yards of 1-inch-wide silk satin ribbon for Whimsy Rose
- ▶ Rococo ribbon trim wine/olive (limited quantity)

Notions

- ▶ Zipper for back (length will vary according to dress size) (measure from top of bodice and at least 4 to 6 inches below waist)

Supplies

- ▶ Small piece of felt for rose backing
- ▶ Jewelry pin for rose back
- ▶ Pattern tracing paper
- ▶ 2-inch wide Whimsy Stick

PATTERN MODIFICATIONS

Use the "Natalie" pattern (size 2-6) for the following modification.

1. Trace front bodice side pattern (View A #2) and center front panel facing (View A #4) onto pattern paper. Pin or tape pattern pieces together along seam line matching notches (fig. 1).
2. From armhole seam, mark shoulder width 1-1/4 inches. Draw a short line at a 90 degree angle from shoulder line. Draw another angled line to meet seam corner of center panel (fig. 2). Draw a slight curve where the two lines meet to create a smooth transition (fig. 3). This will allow the front and back bodices to meet smoothly at the shoulder seam (fig. 4).
4. To modify back bodice, trace (View A #3) onto pattern paper. Since you will be applying a zipper, you will not be cutting the back on the fold, instead

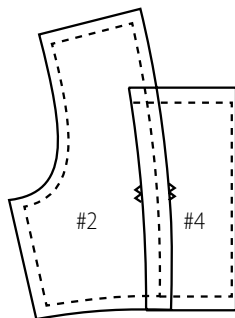


FIGURE 1

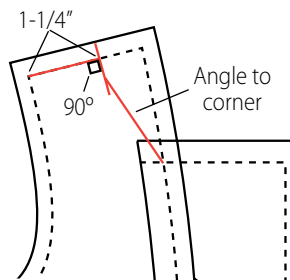


FIGURE 2

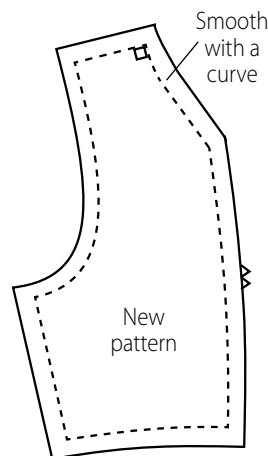


FIGURE 3

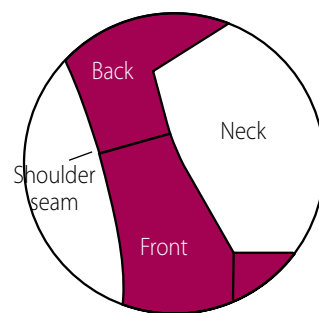


FIGURE 4

cut with edge of pattern on selvage edge. The 1/2 inch space from the center back line to the pattern edge will serve as your zipper seam allowance. Mark shoulder width equal to that of front bodice shoulder. Redraw back neck so that it transitions into original neck edge (fig. 5).

5. Use sleeve pattern provided on the pullout centerfold from this issue's "Tabitha" pattern. If you choose to modify, trace sleeve onto pattern paper and cut out. Mark three vertical lines, top to bottom, evenly spaced apart on sleeve pattern within sleeve cap area (one at center and equally on each side as shown) (fig. 6).
6. From top (sleeve cap), cut on these lines to, but not quite through, bottom edge. Place sleeve pattern on top of another sheet of paper and cardboard or pin-able surface. Pin bottom center and spread cut lines open, pivoting at bottom. Add a approximately 4 extra inches to cap width and pin sleeve

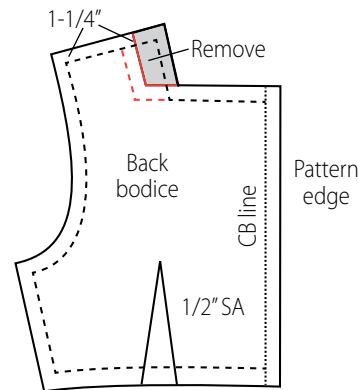


FIGURE 5

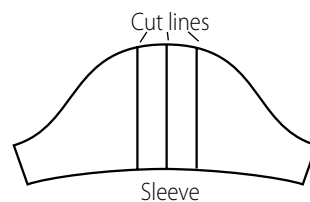


FIGURE 6

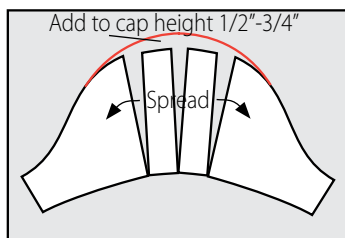


FIGURE 7

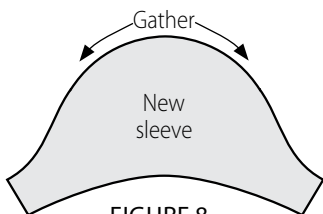


FIGURE 8

to secure. Trace around sliced sleeve and redraw cap curve, raising it 1/2 inch to 3/4 inch from original sleeve at center (fig. 7).

7. Cut out new sleeve (fig. 8).
8. Since back closes with a zipper, cut the back skirt rectangle into to pieces so that you have a center back seam.

CUTTING

From Velveteen

- Cut one center front bodice (#4)
- Cut two modified side fronts bodices (#2)
- Cut two modified back bodices with edge along selvage
- Cut two modified sleeves

From Silk

- Cut a front skirt piece the full width of fabric by length desired (allow at least 4 inches for hem)
- Cut a back skirt piece the full width of fabric the same length as the front. Cut this panel in half to create a center back seam for the zipper application (you will have two back skirt pieces)
- Cut one center front bodice (#4) for lining
- Cut two modified side fronts bodices (#2) for lining
- Cut two modified back bodices with edge along selvage for lining



- Cut two sleeve linings using (unmodified) capped sleeve pattern from “Tabitha” dress on Issue #139 centerfold

CONSTRUCTION

1. With right sides together, place velveteen center front bodice to silk center front bodice lining and stitch across top edge. Flip lining to wrong side and press top seam. Baste within side and bottom seam allowances to treat lining and velveteen as one.
2. Sew velveteen side bodices to back bodice pieces at shoulder seam and side seams. Press seams open. Repeat for silk lining.
3. Treating center panel and lining as one, stitch princess seams to attach center panel to side front velveteen pieces. Match notches.
4. Place silk bodice lining to velveteen bodice matching neck edges. Sew from center back, over shoulder and stop even with the top edge of center front panel; back stitch (fig. 9). Clip back neck seam corner to stitching. Flip lining to inside and press neck edge. Press seams to inside and hand whip stitch silk lining over princess seams on each side of center front panel (fig. 10).
5. Pin bottom edges of bodice and lining even and baste stitch. Treat bodice as one layer. Set bodice aside to prepare sleeves.
6. Stitch two rows of gathering stitches in top cap of velveteen sleeve between notches.
7. Place silk sleeve lining to velveteen sleeve with right sides together and stitch bottom seam. Clip curve of seam, place wrong sides together and press bottom edge.
8. Separate silk lining from velveteen sleeve. Fold sleeve and lining right sides together and pin seams matching velveteen-to-velveteen and silk-to-silk. Align bottom seam with seam pressed upward toward velveteen. Stitch sleeve seams from edge of silk lining to edge of velveteen. Press seam open. Push lining up inside of velveteen sleeve so that wrong sides are together.
9. Gather velveteen sleeve cap to fit silk lining cap. Baste stitch gathered velveteen to flat lining. Treat sleeve as one to apply to bodice armhole.
10. Baste stitch armholes of bodice and lining together. Set sleeves into armholes of bodice with right sides together. Trim armhole seam to 1/4 inch and finish with a serger or zigzag stitch.
11. Stitch back skirt pieces to front skirt at side seams. Press seams open.
12. Gather top edge of skirt to fit bodice waist and stitch skirt to bodice matching center back seam edges to back bodice edges (back of dress will be open from top to bottom at this time). Stitch through bodice and lining layers as one. Grade and trim waist seam and zigzag to finish raw edge.
13. Before applying zipper, cut ribbon sash to fit waist (it is best to fit child’s actual waist and not the waist of the dress, as this should fit snug, but not too tight. Sew raw ends of ribbon to back seam. Allow bottom edge of ribbon to rest 1/2 inch below waist seam. If you are unsure, you may complete dress construction and tie the ribbon around the waist like a bow sash instead.
14. Zigzag or zerge to finish each raw edge of back seam from top of bodice to bottom of skirt.
15. Place zipper to center back edge from top of bodice. Mark skirt seam where zipper stop ends.
16. Apply invisible zipper according to package instructions. You will need a special invisible zipper foot for this application (most fabric stores sell inexpensive, easy to use plastic feet to fit most machines, or check your machine manual to see if you have a foot for this purpose). A 5-grooved pintuck foot will also work to hold the zipper teeth up while you stitch. Be sure that waist seams match once zipped.
17. To finish back skirt seam, pin

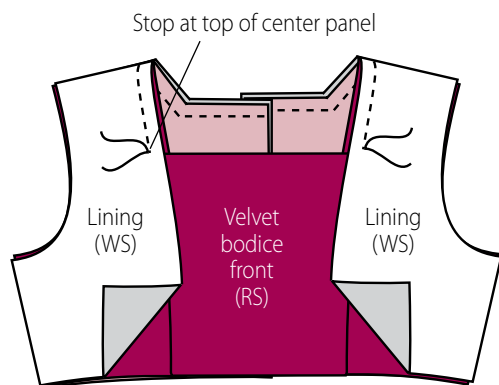


FIGURE 9

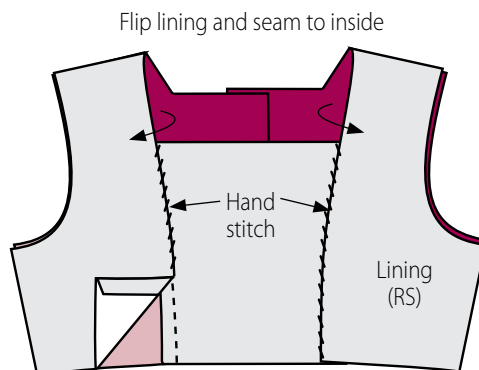


FIGURE 10

from end of zipper to bottom edge with right sides together and stitch seam. Press seam open.

18. Hand tack seams on inside of bodice at top edge if necessary. Sew a hook and eye at top of zipper to secure top of bodice if desired.
19. Optional: Glue baste rococo ribbon trim 1/4 inch from neck edge and sleeve bottom edges. Stitch in place by hand or machine using matching thread or clear monofilament thread. Tuck raw ends of ribbon trim under where they meet at seam and stitch to finish.
20. Press hem 1/4 inch and again 3-3/4 inch to inside of skirt and hand pick stitch a blind hem.
21. Make a Whimsy Rose (see tutorial) or follow instructions provided in Whimsy Stick package. Wrap ribbon around jumbo Whimsy Stick. Stitch along center of ribbon. Fold ribbon in half along stitch line and edge stitch once more to create double looped trim. Coil around a ribbon knot center to form flower. Sew or glue coiled ribbon loops to a circle of felt. Pin or thread tack flower to front of dress. (Whimsy Sticks are available at *store.marthapullen.com*).

For laundering, dry clean only. Remove rose pin from dress before dry cleaning.